


FORMETCO®

DESIGNED TO WORK FOR EVERYONE



QuickFlex™

Installation System



Committed to carbon
neutral operations.

bell.ca/BellForBetter

Bell

At Formetco we've always designed products with the whole outdoor industry in mind and our QuickFlex™ System is a great example of that philosophy. We started by building it around the standard poster panel so it would be universal, then refined it to work with every kind of substrate, lightweight and standard vinyl, even paper.

TRUE FLEXIBILITY

This is a truly universal system designed to work with all standard Poster Panels

- Maintains the Outdoor Industry Standard copy area of 10 x 20 & 16 x 12
- Offers an easy transition between Paper, Vinyl and Lightweight Flex posters
- Works if your vinyl is pocketed, non-pocketed, over or undersized
- Nothing will interfere with posting or scraping paper.

NO FINISHING

- Every printer you work with is equipped and ready to produce graphic for the QuickFlex™ system
- Requires no pockets or edges finishing, the graphic is simply cut to size
- Posting requires Only One Installer, Offering outstanding labor savings

Prep The Single Sheet Poster (SSP) Prior To Posting:

- 1.The SSP should have asterisk marks printed at the locations provided in the print specification layout.
- 2.The SSP should be folded from bottom to top 4 times and folded from left to right as shown in the QuickFlex Poster Folding diagram.
- 3.Carry up the SSP to the Poster Panel catwalk using a medium sized duffle / carrying bag. This bag can also be used for storing the SSP that's going to be taken down.
- 4.IMPORTANT - Installers should follow their company's safety protocols before transitioning from the extension ladder to the catwalk and while performing their duties on the billboard structure.

Steps On How to Take Down a Single Sheet Poster (SSP):

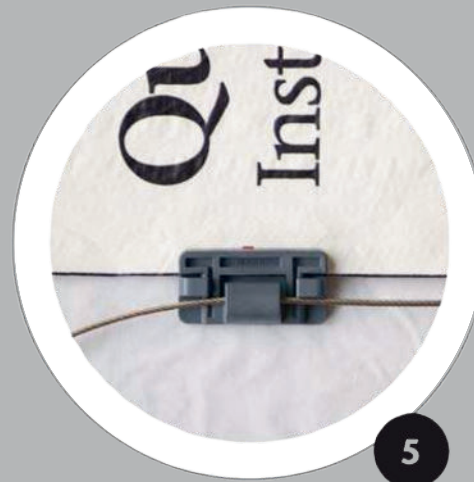
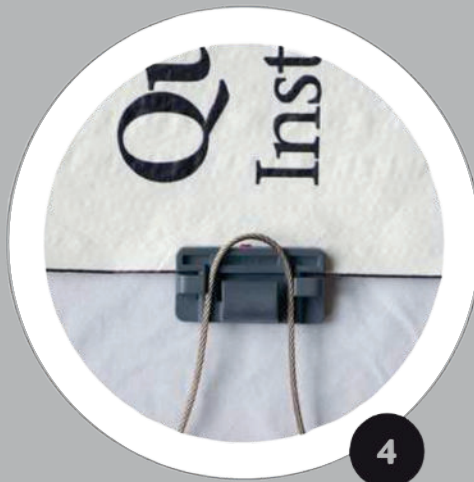
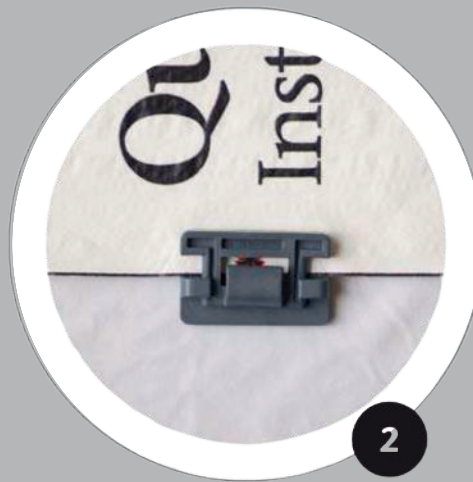
- 1.Flip the tensioning handle to the loose position and slide the adjustment bar to the last straight slot on the bar.
- 2.Set the cable to the last chain link on the tensioning handle. This will give enough slack in the cable so the SSP can be removed.
- 3.Using the extension pole & tool, unhook the side cables from all the side cable guides.
- 4.Start unclipping the poster clips from the cable along the sides, just the 1st four poster clips from the bottom up, as well as all the poster clips along the bottom. NOTE – In windy conditions the sides poster clips can be left attached to the SSP sides while only removing the SSP from the top and bottom poster clips. Remove the SSP from the side poster clips from the same direction as the wind is blowing from. Roll up the SSP while walking with the wind to the opposite side. Remove the remaining side poster clips from the SSP.
- 5.Unhook the top cable from the top cable guides.
- 6.Detach the cable from the tensioning handle and walk it towards the center bottom right trim and hook the cable snap hook to one of the drain holes. This will keep the poster about chest high making it easier to unclip the poster from the top cable without bending over.
- 7.Starting on either side by unclipping the remaining side poster clips, then all the top poster clips working your way over to the other end until all of the poster clips have been unclipped from the top and side cables.
- 8.Bundle up the SSP and stuff in a duffle bag. Now you're ready to install the new SSP.

Steps On How to Post a New Single Sheet Poster (SSP):

1. Lay the SSP on the right end of the poster panel and unfold toward the left end.
2. Hook the 1st four poster clips of the top and left side of the SSP to the top and left side cable.
3. Work your way down toward the right end of the poster panel while clipping on all of the remaining top poster clips and the 1st four poster clips of the right side of the SSP to the right cable.
4. Grab the cable coming out of the bottom right corner pulley and pull it towards the tensioning handle, hook the cable to the last link on the chain to hold the SSP up. While pulling the SSP up make sure that the side cables don't fall behind the side cable guides preventing the SSP from going up.
5. Using the cable pole & tool, hook the top cable over the top cable guides, starting on the left end working your way over to the right end.
6. Hook the remaining right side poster clips to the right-side cable.
7. Starting on the right side hook the bottom poster clips to the bottom cable that is fixed to the bottom right corner pulley bracket and work your way to the left end of the poster panel.
8. Using the cable pole & tool, hook the left side, right side, and bottom cables over the remaining cable guides.
9. Pull the slack out of the cable that's attached to the tensioning handle by detaching the cable end from the chain and pulling it closer to the tensioning handle spring. You will then need to back down 4 to 6 links on the chain before re-attaching the cable. This will allow you to flip the handle into the tensioning position easier as well as adjust the adjustment bar.
10. Lift the tensioning handle halfway and slide the adjustment bar into the angled slot, then lock the handle into the tension position.
For more tension, move to the next slot or adjust the chain link.
To reposition the poster, release the handle, tug the poster, and re-tension. If the handle is hard to lock, reduce the tension and readjust.
11. Lastly check that all the poster clips are pulling the SSP tight and even with no wrinkles. If there are any wrinkles in the corner simply push the very corner poster clips toward the corner pulley bracket until they disappear.

POSTER CLIP INSTALLATION

Make sure the clip is straight with the edge of the poster to eliminate wrinkles. Most posters where the QuickFlex™ Poster Clips are to be installed

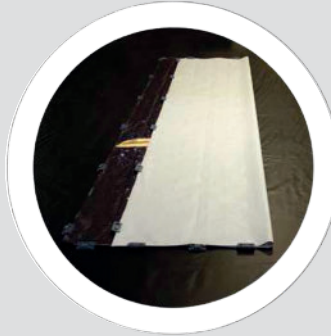


QuickFlex™

SINGLE SHEET POSTER



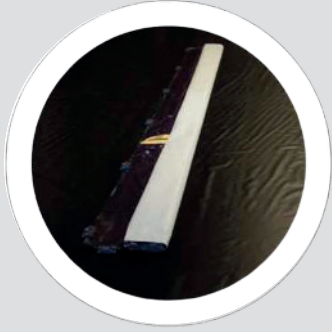
Lay out Poster on floor. If Installing from left to right, mark on the back of the Poster TL on the top left corner



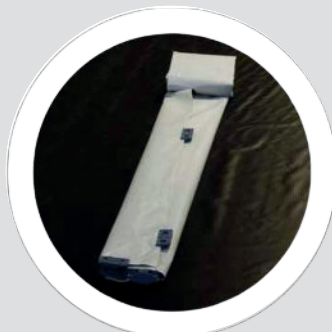
Fold bottom up to about 6" below top of poster



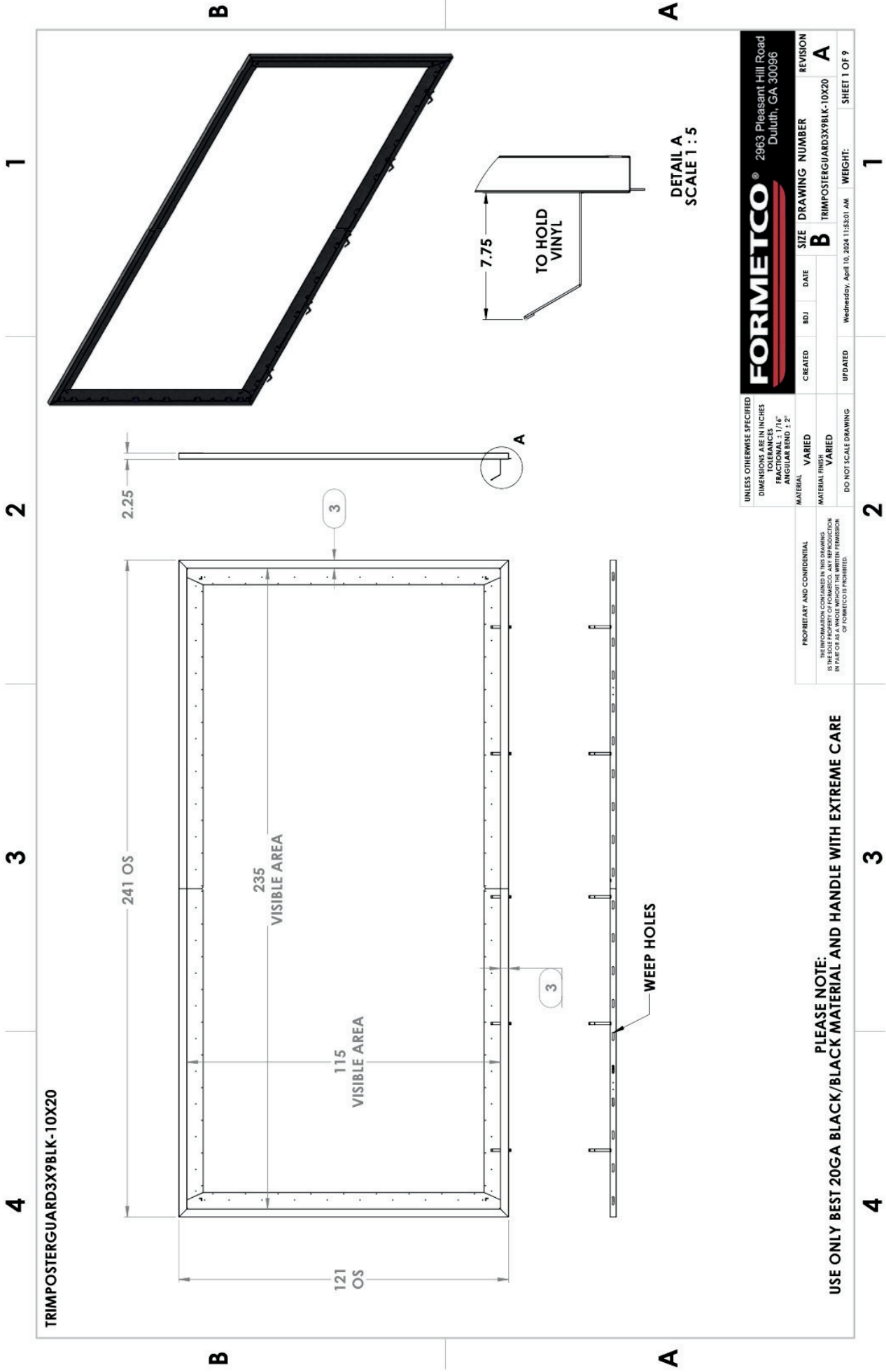
Fold bottom up to align with first fold



Fold top over on the folds



Starting on the right side of the Poster roll the poster in a small package



FORMMETCO®					2963 Pleasant Hill Road Duluth, GA 30096	
CREATED	BOJ	DATE	SIZE	DRAWING NUMBER	REVISION	
			B	TRIMPOSTERGUARD3X9BLK-10X20	A	
UPDATED	Wednesday, April 10, 2024 11:53:01 AM			WEIGHT:	SHEET 1 OF 9	

PLEASE NOTE:
USE ONLY BEST 20GA BLACK/BLACK MATERIAL AND HANDLE WITH EXTREME CARE

4

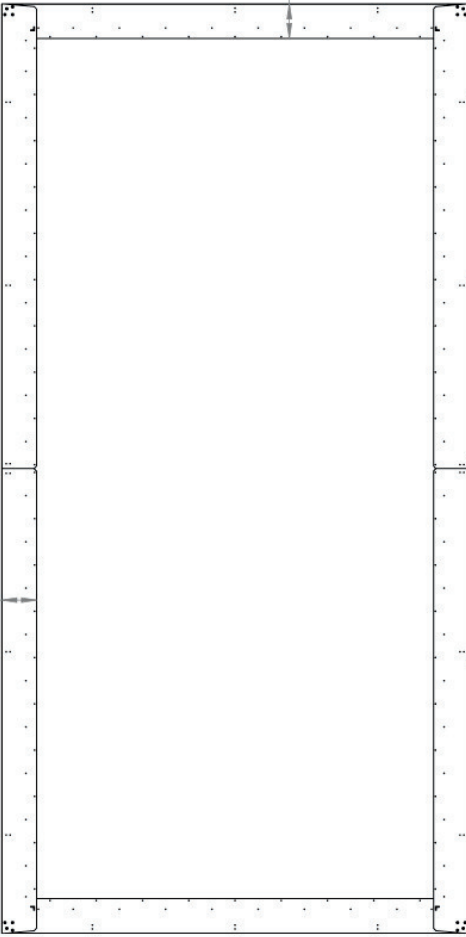
3

2

1

TRIMPOSTERGUARD3X9BLK-10X20
BACK VIEW

9



B

B

2.25



A

A

PLEASE NOTE:
USE ONLY BEST 20GA BLACK/BLACK MATERIAL AND HANDLE WITH EXTREME CARE

UNLESS OTHERWISE SPECIFIED DIMENSIONS ARE IN INCHES TOLERANCES FRACTIONAL ± 1/16" DECIMAL ± .015" ANGULAR BEND ± 2°		FORMETCO® 2963 Pleasant Hill Road Duluth, GA 30096		SIZE DRAWING NUMBER REVISION	
MATERIAL VARIED	VARIED	CREATED	BDJ	DATE	A
MATERIAL FINISH VARIED	VARIED	UPDATED	Wednesday, April 10, 2024 11:53:01 AM		TRIMPOSTERGUARD3X9BLK-10X20
DO NOT SCALE DRAWING		WEIGHT:		SHEET 2 OF 9	

4

3

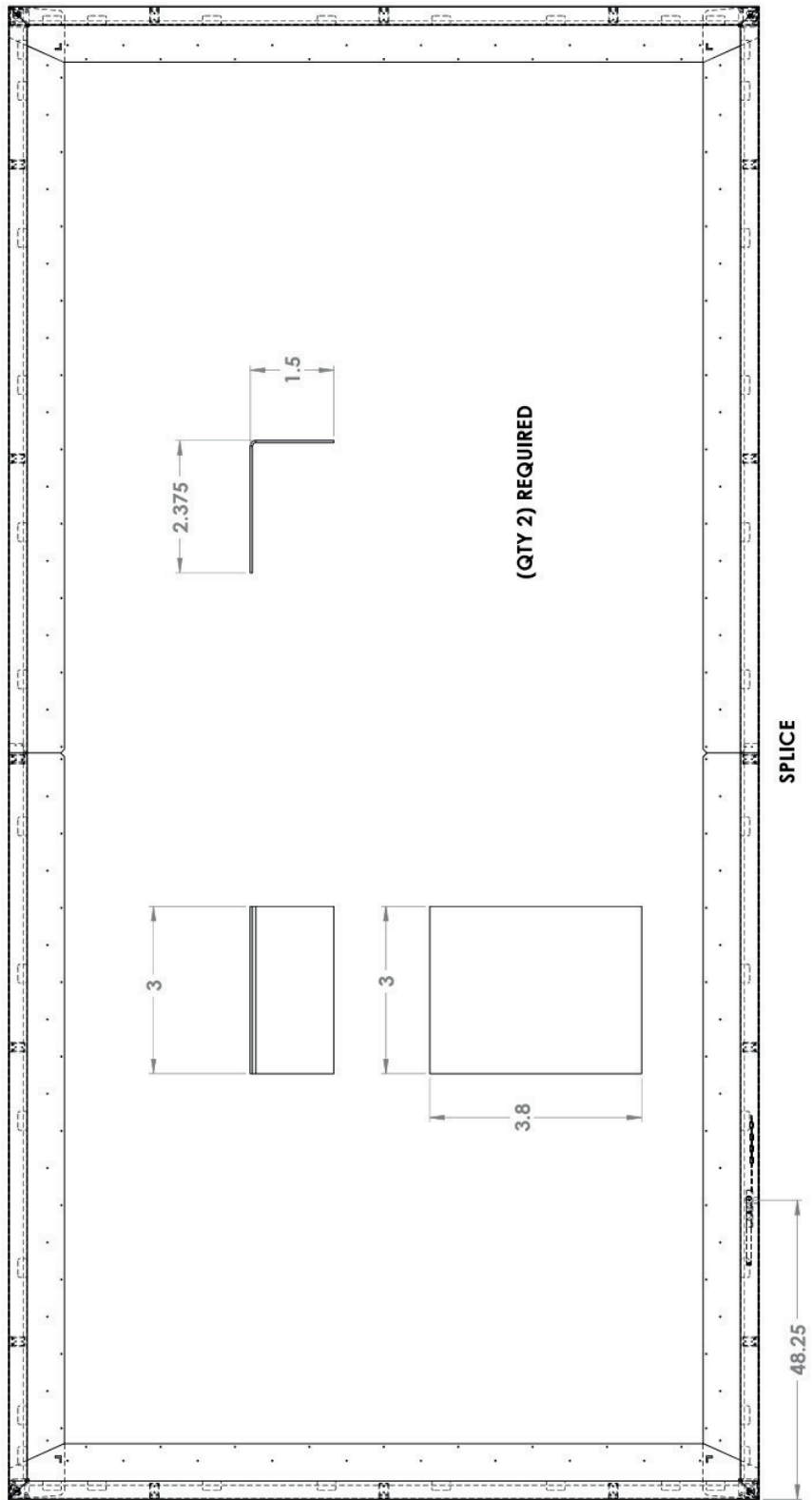
2

1

4 3 2 1

TRIMPOSTERGUARD3X9BLK-10X20
SPICES

SPLICE



SPLICE

UNLESS OTHERWISE SPECIFIED
DIMENSIONS ARE IN INCHES
TOLERANCES
FRACTIONAL $\pm 1/16"$
ANGULAR BEND $\pm 2^\circ$

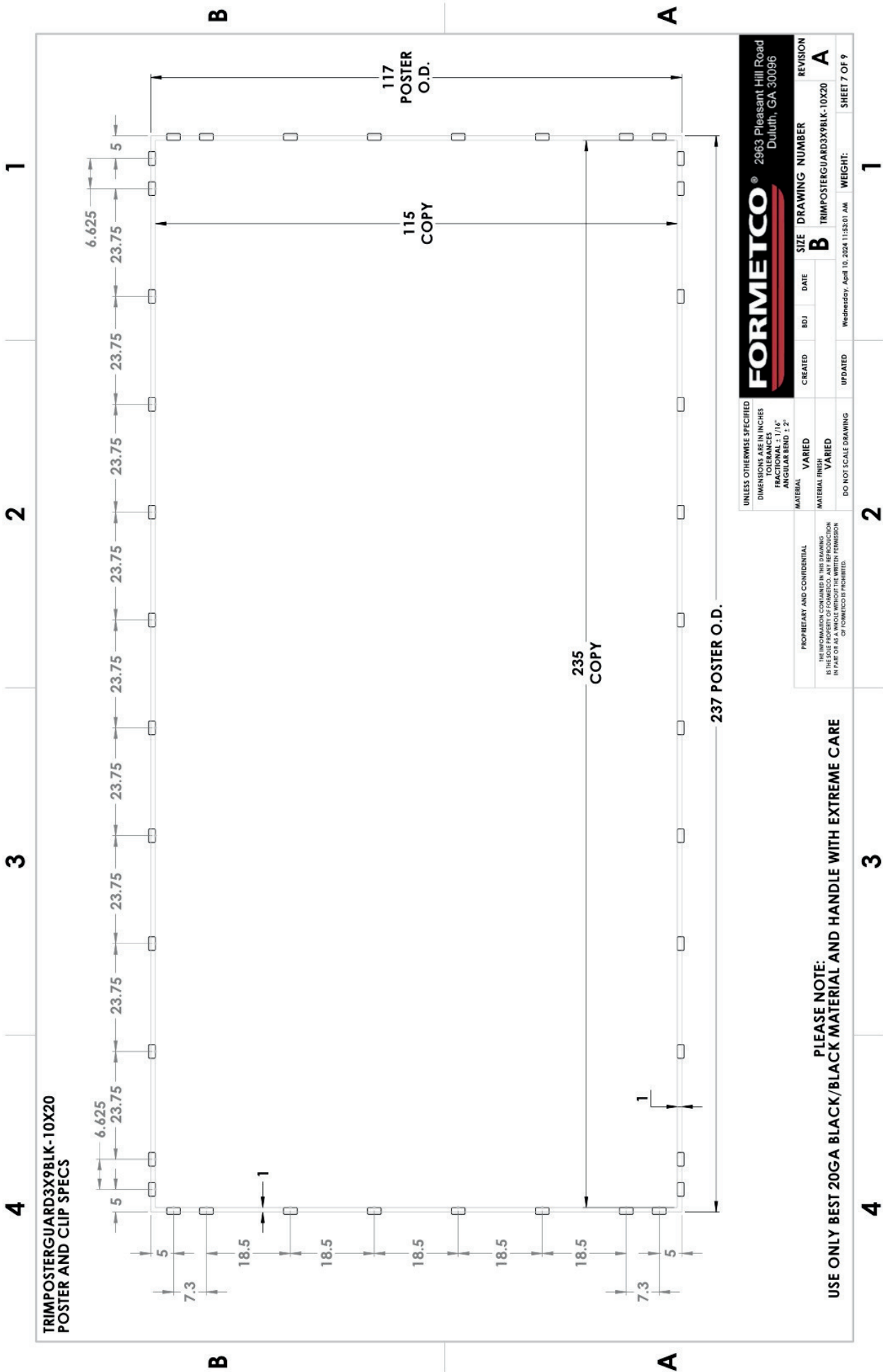
PROPERTY AND CONFIDENTIAL
THE INFORMATION CONTAINED HEREIN IS THE PROPERTY
OF FORMIETCO AND IS NOT TO BE REPRODUCED OR
TRANSMITTED IN ANY FORM OR BY ANY MEANS
ELECTRONIC OR MECHANICAL, INCLUDING
PHOTOCOPYING, RECORDING, OR BY ANY
INFORMATION STORAGE AND RETRIEVAL
SYSTEM, WITHOUT THE WRITTEN PERMISSION
OF FORMIETCO.

FORMIETCO® 2963 Pleasant Hill Road
Duluth, GA 30096

CREATED	DATE	SIZE	DRAWING NUMBER	REVISION
		B	TRIMPOSTERGUARD3X9BLK-10X20	A

UPDATED	DATE	WEIGHT
Wednesday, April 10, 2024 11:53:01 AM		SHEET 6 OF 9

PLEASE NOTE:
USE ONLY BEST 20GA BLACK/BLACK MATERIAL AND HANDLE WITH EXTREME CARE



FORMETCO®						2963 Pleasant Hill Road Duluth, GA 30096	
CREATED	BDJ	DATE	SIZE	DRAWING NUMBER	REVISION		
			B	TRIMPOSTERGUARD3X9BLK-10X20	A		
UPDATED	Wednesday, April 10, 2024 11:53:01 AM		WEIGHT:		SHEET 7 OF 9		

UNLESS OTHERWISE SPECIFIED			
DIMENSIONS ARE IN INCHES			
TOLERANCES			
FRACTIONAL ± 1/16"			
ANGULAR BEND ± 2°			
MATERIAL		VARIED	
PROPERTY AND CONFIDENTIAL		VARIED	
THE INFORMATION CONTAINED IN THIS DRAWING IS THE PROPERTY OF FORMETCO. NO REPRODUCTION IN PART OR AS A WHOLE WITHOUT THE WRITTEN PERMISSION OF FORMETCO IS PERMITTED.		DO NOT SCALE DRAWING	

PLEASE NOTE:
USE ONLY BEST 20GA BLACK/BLACK MATERIAL AND HANDLE WITH EXTREME CARE

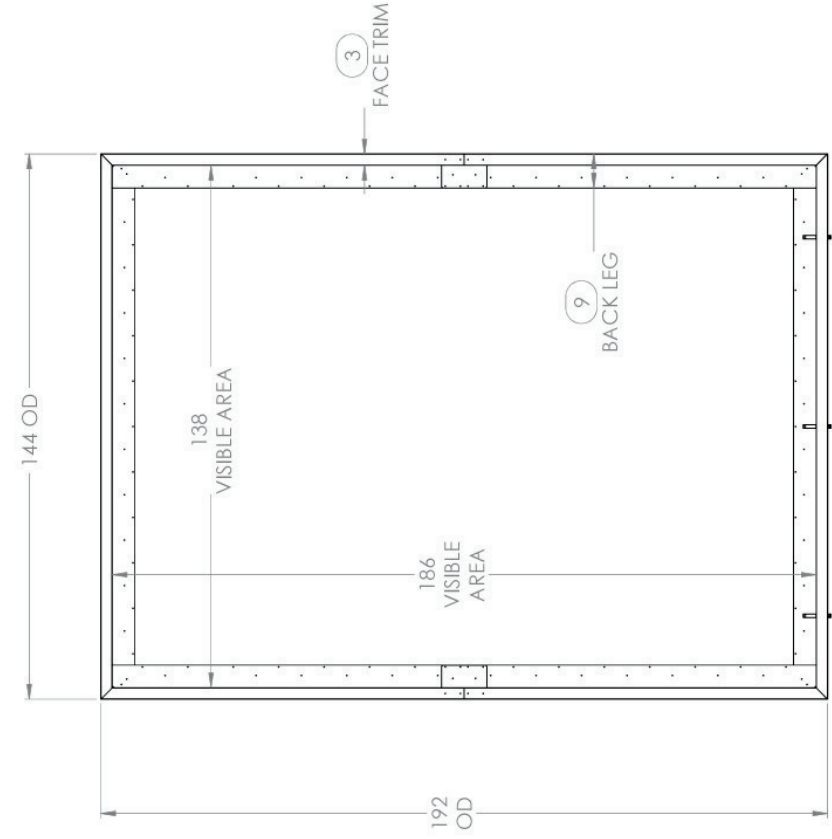
4

3

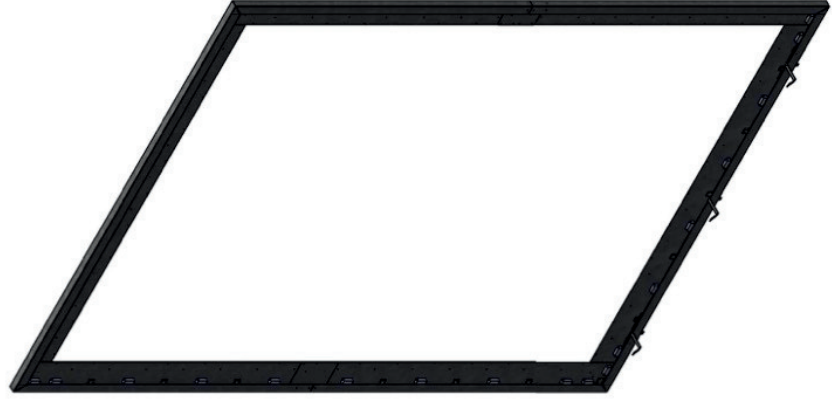
2

1

TRIMPOSTERGUARD3X6BLK-16X12 FRONT



2.25 SIDE



DETAIL O
SCALE 1:8



QFPOSTERHOLDER12GA
3X

FORMETCO® 2963 Pleasant Hill Road Duluth, GA 30096				SIZE	DRAWING NUMBER	REVISION
				B	TRIMPOSTERGUARD3X6BLK-16X12	A
CREATED	BDJ	DATE				
UPDATED		Thursday, June 19, 2025 9:33:29 AM			WEIGHT:	SHEET 1 OF 10

UNLESS OTHERWISE SPECIFIED DIMENSIONS ARE IN INCHES TOLERANCES FRACTIONS DECIMALS ANGULARS 1/8" 0.0312" 0.015" 1/32" 1.0°	MATERIAL 20GA STEEL	MATERIAL FINISH PAINTED B/B	DO NOT SCALE DRAWING
PROPRIETARY AND CONFIDENTIAL THE INFORMATION CONTAINED IN THIS DRAWING IS THE SOLE PROPERTY OF FORMETCO. ANY REPRODUCTION HEREOF OR ANY PART THEREOF WITHOUT THE WRITTEN CONSENT OF FORMETCO IS PROHIBITED.			

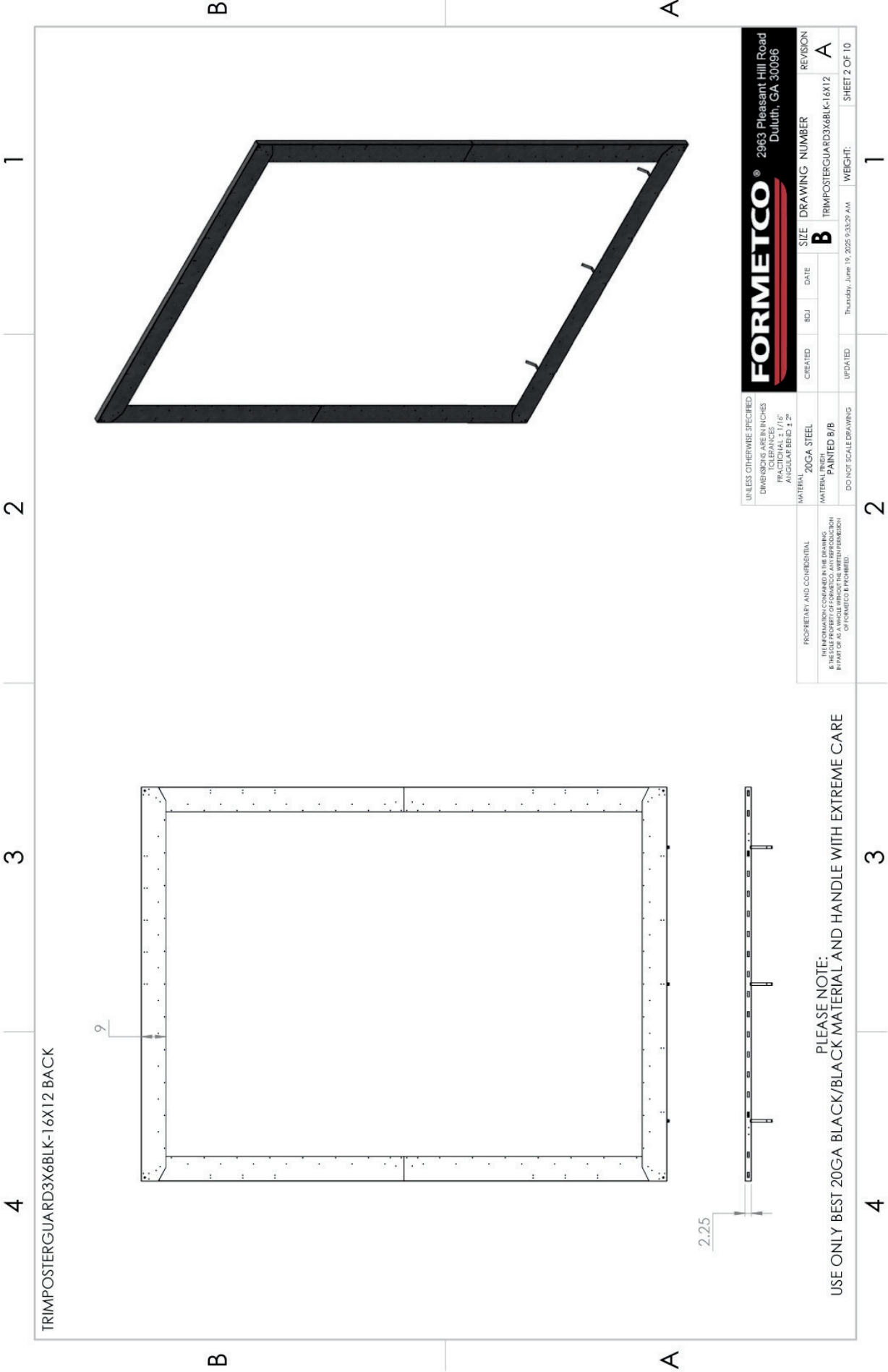
PLEASE NOTE:
USE ONLY BEST 20GA BLACK/BLACK MATERIAL AND HANDLE WITH EXTREME CARE

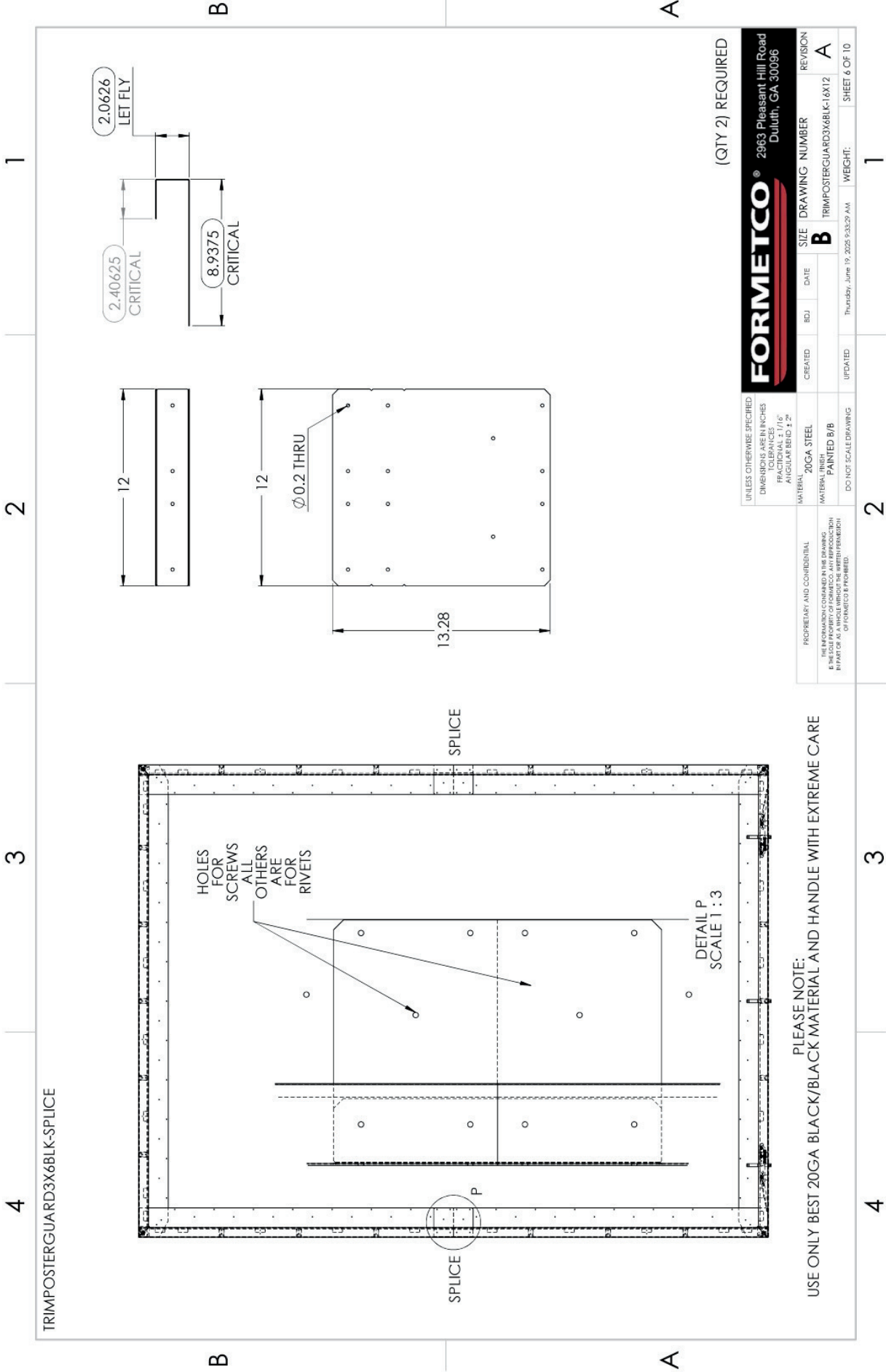
4

3

2

1





PLEASE NOTE:
USE ONLY BEST 20GA BLACK/BLACK MATERIAL AND HANDLE WITH EXTREME CARE

UNLESS OTHERWISE SPECIFIED DIMENSIONS ARE IN INCHES TOLERANCES: FRACTIONS ± 1/16" DECIMALS ± .015" ANGULARS BIDD 1°		PROPERTY AND CONFIDENTIAL ALL INFORMATION CONTAINED IN THIS DRAWING IS THE SOLE PROPERTY OF FORMETCO. ANY REPRODUCTION IN PART OR IN WHOLE WITHOUT WRITTEN PERMISSION OF FORMETCO IS PROHIBITED.		FORMETCO® 2863 Pleasant Hill Road Duluth, GA 30096	
MATERIAL	20GA STEEL	CREATED	BOJ	DATE	SIZE
MATERIAL FINISH	PAINTED B/B	UPDATED			DRAWING NUMBER
DO NOT SCALE DRAWING		Thursday, June 19, 2025 9:32:29 AM		B	
		WEIGHT:		TRIMPOSTERGUARD3X6BLK-1612	
				REVISION	
				A	
				SHEET 6 OF 10	

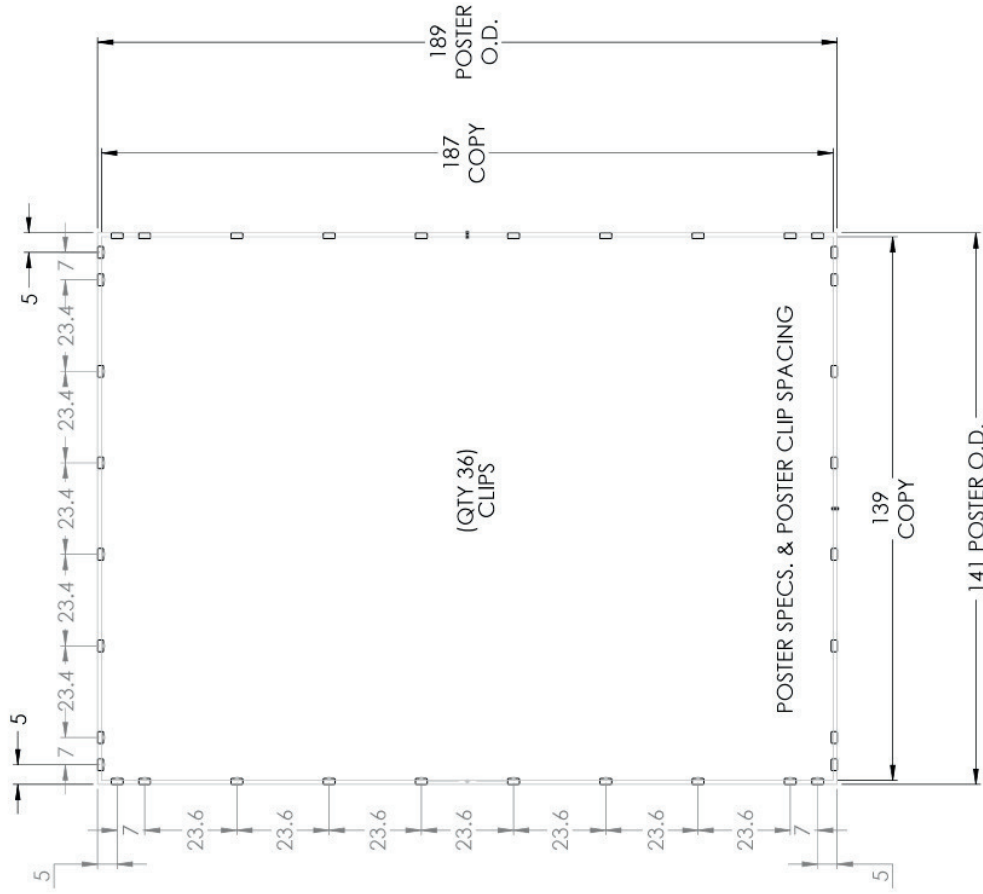
4

3

2

1

TRIMPOSTERGUARD3X6BLK-16X12 CLIPS



PLEASE NOTE:
USE ONLY BEST 20GA BLACK/BLACK MATERIAL AND HANDLE WITH EXTREME CARE

UNLESS OTHERWISE SPECIFIED DIMENSIONS ARE IN INCHES TOLERANCES: FRACTIONS DECIMALS ANGULAR BEG. 2°		FORMETCO® 2963 Pleasant Hill Road Duluth, GA 30096	
MATERIAL	20GA STEEL	SIZE	DRAWING NUMBER
MATERIAL FINISH	PAINTED B/B	B	TRIMPOSTERGUARD3X6BLK-16X12
DO NOT SCALE DRAWING	UPDATED	DATE	REVISION
		Thursday, June 19, 2025 9:32:29 AM	A
		WEIGHT:	SHEET 7 OF 10

4

3

2

1

1 2 3 4

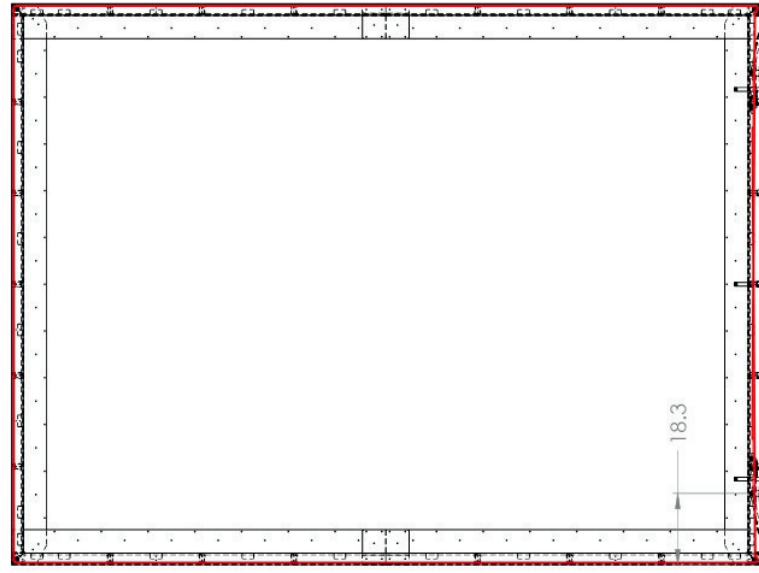
B B

A A

CABLE

62' CUT LENGTH

61'-9" LOOP END TO END



UNLESS OTHERWISE SPECIFIED DIMENSIONS ARE IN INCHES TOLERANCES FRACTIONS DECIMALS ANGULARS 1/8" 1/16" 1/32" 1/4" 1/2" 1"		17GA STEEL MATERIAL FINISH GALVANIZED		DO NOT SCALE DRAWING	
PROPRIETARY AND CONFIDENTIAL THE INFORMATION CONTAINED IN THE DRAWING IS THE SOLE PROPERTY OF FORMETCO. ANY REPRODUCTION IN PART OR AS A WHOLE WITHOUT THE WRITTEN PERMISSION OF FORMETCO IS PROHIBITED.		FORMETCO® 2963 Pleasant Hill Road Duluth, GA 30096		REVISION A	
DRAWING NUMBER B		SIZE B		WEIGHT: SHEET 10 OF 10	
TRIMPOSTERGUARD3X8LK-16X12		DATE Thursday, June 19, 2025 9:33:29 AM			
CREATED		UPDATED			
BOJ					



Hardware Contacts

Chris Adams
Product Specialist

☎ 678-951-1203

📱 770-329-4316

✉ chrisadams@formetco.com

Matt Moates
West Coast/ Canada

☎ 678-951-1159

📱 813-900-7238

✉ mattm@formetco.com

FORMETCO®

2963 Pleasant Hill Road Duluth, GA 30096

Tel: (800)367-6382

Web: Formetco.com