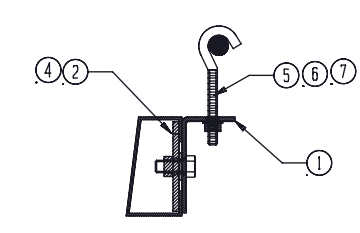
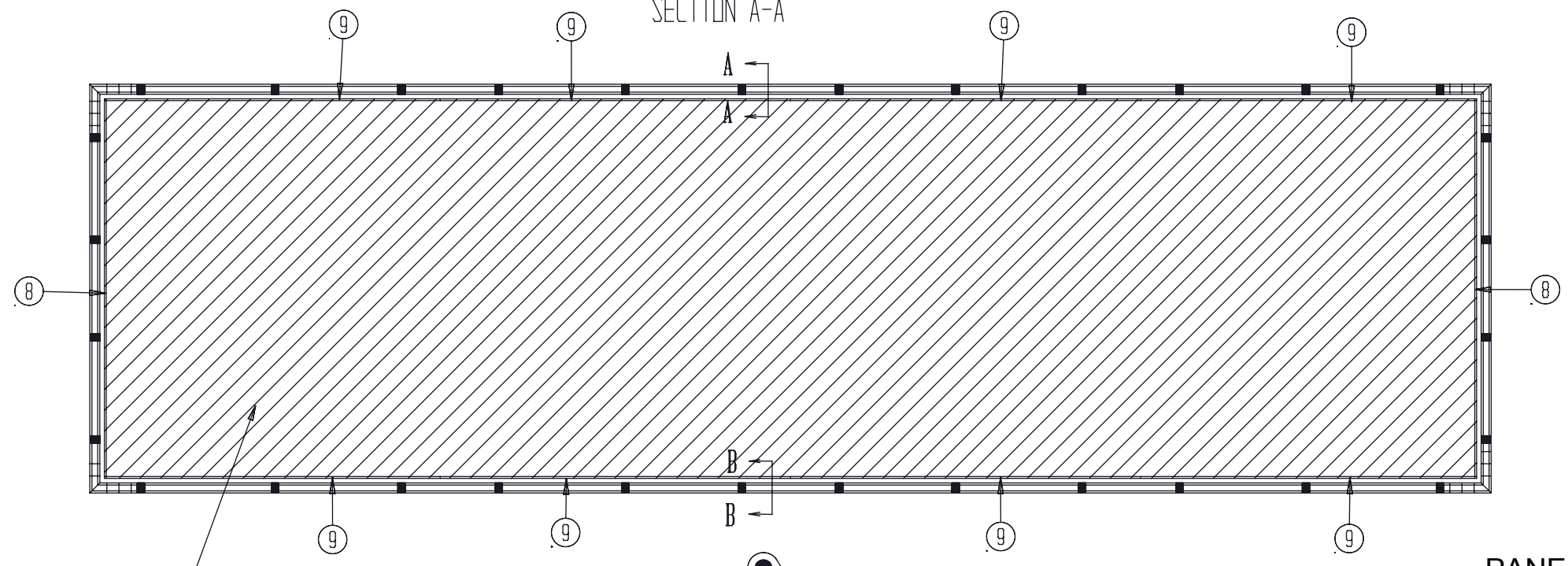


SECTION A-A



SECTION B-B



TOP AND BOTTOM GRIPPER BARS
REQUIRE THREE PULL POINTS PER BAR
SIDE GRIPPER BARS REQUIRE 4 PULL POINTS PER BAR

PANEL-FREE BACKDROP VINYL SPECIFICATIONS

VINYL AREA (LAID IN THE FLAT BEFORE FINISHING)
SUBTRACT 6" FROM TOTAL SIGN HEIGHT AND WIDTH

OUTSIDE DIMENSIONS (OUTER POCKET EDGE TO OUTER POCKET EDGE)
SUBTRACT 12" FROM TOTAL SIGN HEIGHT AND WIDTH

COPY / VISIBLE AREA (OUTER POCKET EDGE TO OUTER POCKET EDGE)
SUBTRACT 8" FROM TOTAL SIGN HEIGHT AND WIDTH

LIVE / ACTIVE / SAFE AREA (FOR TEXT & GRAPHICS)
SUBTRACT 20" FROM TOTAL SIGN HEIGHT AND WIDTH

BLEED: FULL BLEED OF BACKGROUND COLORS TO BACKSIDE OF POCKETS
FINISHING: 2" POLE POCKETS ALL SIDES
MATERIAL WEIGHT: 12 OUNCE RECOMMENDED

ITEM NUMBER	QUANTITY	PART NUMBER	DESCRIPTION
1		TMP-1008126	CHANNEL BRACKET
2		TMP-1007039	CHANNEL NUT
3			
4			1/2-13 X 1 1/4" HEX HEAD CAP SCREW
5			3/8-16 X 4" GRIPPER BAR BOLT
6			FLAT WASHER
7			3/8-16 NYLON LOCK NUT
8			3/4" DIA. GRIPPER BAR
9			3/4" DIA. GRIPPER BAR
10			REQUIRED VINYL SIZE

UNLESS OTHERWISE SPECIFIED
DIMENSIONS ARE IN INCHES
TOLERANCES
FRACTIONAL ± 1/16"
ANGULAR BEND ± 2°

FORMETCO® 2963 Pleasant Hill Road
Duluth, GA 30096

PROPRIETARY AND CONFIDENTIAL	MATERIAL	VARIED	CREATED	BDJ	DATE	SIZE	DRAWING NUMBER	REVISION
THE INFORMATION CONTAINED IN THIS DRAWING IS THE SOLE PROPERTY OF FORMETCO. ANY REPRODUCTION IN PART OR AS A WHOLE WITHOUT THE WRITTEN PERMISSION OF FORMETCO IS PROHIBITED.	MATERIAL FINISH	VARIED	3/4/2022 4:14:08 PM			B	PF-BACKDROP-KIT	A
	DO NOT SCALE DRAWING	UPDATED	Tuesday, August 29, 2023 3:51:43 PM			WEIGHT:	SHEET 1 OF 1	