



FORMETCO
SELECT
SAFETY EQUIPMENT

PRODUCT INFORMATION CATALOG



Formetco’s Hardware division is a one-stop shop for all your outdoor hardware, operations, and safety needs. Not only do we develop, manufacture and enhance products based on our own experience, but we also listen to customer requests and incorporate their feedback into our designs.

We provide products made of the highest quality materials, offering an outstanding value for our customers worldwide. We continue our legacy of quality and innovation by constantly improving our product line and designing solutions to fit the needs of the entire industry.

2	ULTRALIGHT NONCONDUCTIVE HARNESS SAF-GE-PC100KK2PE [S & ML]
4	ULTRALIGHT FULL BODY HARNESS SAF-GE-ULT300K4 [S, ML, & XL]
6	SHOCK ABSORBING DUAL LANYARD SAF-GE-SAPDGULTALUMINUM, SAF-GE-SAPDGSTEEL
8	SELF RETRACTING DUAL LANYARD SAF-GE-SRL-2N9328BALUMINUM, SAF-GE-SRL-2N9328BSTEEL
10	CABLE SAFETY SLEEVE SAF-VI-GOCABLESLEEVE
12	RESTING AND POSITIONING LANYARDS SAF-GE-R300A, SAF-GE-R300AG, SAF-GE-LR300AR
14	ANCHOR BEAM STRAP SAF-GE-ANCHORBEAMSTRAP, SAF-GE-ANCHORBEAMSTRAP-6FT
16	SAFETY HELMET AND LANYARD SAF-GE-HELMET, SAF-GE-HELMETLANYARD
18	SAFETY GLASSES AND GLOVES SAF-GE-GLOVES, SAF-GE-SAFETYGLASSESGRAY
20	TOOL POUCH AND TRANSPORT BUCKET SAF-GE-TOOLPOUCH, SAF-GE-VINYLTOLTRANSPORTBUCK
22	TOOL DROP PREVENTION GEAR SAF-GE-TOOLLANYARD, SAF-GE-TOOLTAPE, SAF-GE-TOOLDRING, SAF-GE-WRISTBAND, SAF-GE-BATTERYHOLSTER R
23	TRAUMA STRAPS SAF-GE-AT01TRAUMASTRAPS
24	KERNMANTLE HOISTING ROPE SAF-ROPE [50FT, 75FT, 100FT, 125 FT]
26	HORIZONTAL LIFELINES
27	VERTICAL LIFELINE - LADDER GRAB
28	LADDER STABILIZER FOR CATWALKS
30	LADDER STABILIZER FOR FIXED LADDERS
32	SAFETY POLE

ULTRALIGHT NONCONDUCTIVE HARNESS
SAF-GE-PC100KK2PE [S & ML]

Product Details

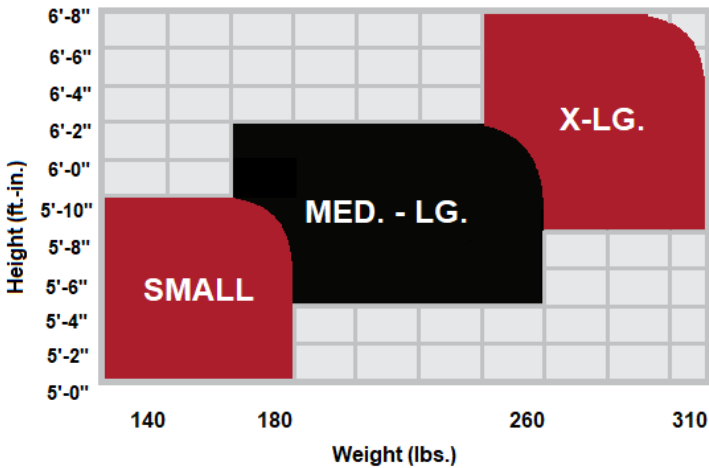


Description

Formetco Full Body Harnesses’ distribute fall arrest forces across the shoulders, upper thighs, chest, and pelvis. The Kevlar webbing used is heat resistant and flame retardent for a 700 degree char temperature ideal for welding applications. The contrasting stitching color of the product makes inspection easy for the user. The hardware of the product is dielectric and designed for workers operating in conditions where there are possible electrical hazards.

The materials used offer the user maximum comfort, mobility and safety. The harness should be selected according to the requirements of the work environment. This product is manufactured under strict quality standards.

Harness Sizing Chart



System:	Webbing:	"D" rings:	Hardware:	Adjusting points:	Size:
Fall, ascend/descend, positioning	100% Kevlar® DuPont™	1 dorsal, 1 on chest, 2 on positioning strap	Dialectric 9 kV	6	Universal

Buckles:	Capacity:	Color:	Standard:	Accessories:
Chest, torso and legs pass-through	59-140 kg/ 130-310 lb	Blue	ANSI Z359.11 - 2014	Belt, 2 Lanyard keepers, Impact indicator, Paddings on belt shoulders, back and legs



FORMECTO
2963 Pleasant Hill Road
Duluth, GA 30096
Tel: (800) 367-6382
Web: Formetco.com

ULTRALIGHT FULL BODY HARNESS
SAF-GE-ULT300K4 [S, ML, & XL]

Product Details



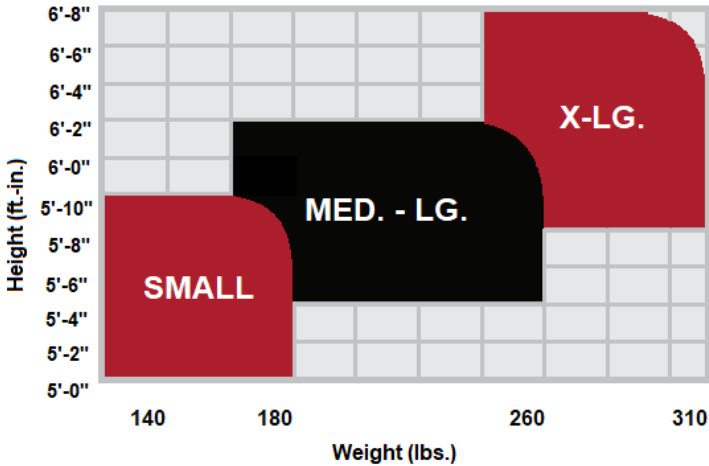
Description

Formetco Full Body Harnesses’ distribute fall arrest forces across the shoulders, upper thighs, chest, and pelvis.

The webbing color facilitates remote recognition and its contrasting stitching color makes inspection easy for the user. The materials used offer the user maximum comfort, mobility and safety. The harness should be selected according to the requirements of the work environment. This product is manufactured under strict quality standards.



Harness Sizing Chart



System:	Webbing:	"D" rings:	Hardware:	Adjusting points:	Size:
Fall, ascend/descend, positioning	High tenacity polyester webbing	1 dorsal, 1 on chest, 2 on positioning strap	Aluminum	5	Universal

Buckles:	Capacity:	Color:	Standard:	Accessories:
Quick-release and pass-through on legs, chest and torso	59-140 kg/ 130-310 lb	Hi-Vis Green/Black	ANSI Z359.11 - 2014	Belt, 2 lanyard keepers, impact indicator, paddings on shoulders back and legs



FORMETCO
2963 Pleasant Hill Road
Duluth, GA 30096
Tel: (800) 367-6382
Web: Formetco.com

SHOCK ABSORBING DUAL LANYARD
SAF-GE-SAPDGULTALUMINUM, SAF-GE-SAPDGSTEEL

Product Details



ALUMINUM REBAR HOOKS

STEEL REBAR HOOKS

Description

Formetco Select Dual Leg Shock Absorbing Lanyard with Rebar Hooks provides continuous fall protection when climbing fixed ladders and walking on billboard catwalks.

- Features & Specs:
- For work heights over 20 ft.; with maximum working load of 310 lbs.
 - Allows for 100% tie-off at all times
 - 6 ft. free fall shock absorbing legs, contracts to 4 ft.; to prevent tripping
 - Easy-to-use steel or aluminum rebar hooks
 - Integrated shock absorber will only activate under high levels of force
 - Impact indicators will be exposed when subjected to a fall arrest event
 - For use with fall rated full body harness only
 - Breaking strength of Hight Tenacity Polyester webbing: 6,000 lbs.
 - Meets or exceeds ANSI/ASSE Z359.13-2013 and OSHA applicable standards

Cleaning

Hand wash with cold water and neutral soap, dry in the shade and keep away from the sunlight when storing.

Inspection

Make an inspection plan with qualified personnel. The products are subject to an inspection before and after each use. Check for damage, deterioration or malfunction of stitching, webbing, labels and hooks. A written or electronic record of each inspection should be filled and kept.

This cable safety sleeve meets OSHA, ANSI, and CSA standards.

System:	Lanyard:	Hook:
Fall	Accommodates 5/16-in (8mm) or 3/8-in. (10 mm) cable	Dual shock-absorbing system



FORMETCO
2963 Pleasant Hill Road
Duluth, GA 30096
Tel: (800) 367-6382
Web: Formetco.com

SELF RETRACTING DUAL LANYARD

SAF-GE-SRL-2N9328BALUMINUM, SAF-GE-SRL-2N9328BSTEEL

Product Details



ALUMINUM REBAR HOOKS

STEEL REBAR HOOKS

Description

Formetco Select Dual Leg Self-Retracting Leading-Edge Lanyard with Rebar Hooks provides continuous fall protection when climbing fixed ladders and walking on billboard catwalks.

- Features & Specs:
- Approved for foot level tie-off and leading-edge applications
 - For work heights over 15 ft.; with maximum working load of 310 lbs.
 - Allows for 100% tie-off at all times
 - Designed to instantly interrupt an initiated fall
 - Easy-to-use connection pin
 - High-impact ABS plastic housing, extremely durable
 - Steel or aluminum rebar hooks
 - Built-in swivel prevents lanyard twisting
 - Lanyard shock adsorber pack will only activate under high levels of force
 - Impact indicators will be exposed when subjected to a fall arrest event
 - For use with fall rated full body harness only
 - Webbing Length: 7 ft.
 - Breaking strength of 1 in. Dyneema (HPPE) webbing: 6,000 lbs.
 - Meets or exceeds ANSI Z359.14-2014 and OSHA applicable standards

Cleaning

Hand wash with cold water and neutral soap, dry in the shade and keep away from the sunlight when storing.

Inspection

Make an inspection plan with qualified personnel. The products are subject to an inspection before and after each use. Check for damage, deterioration or malfunction of stitching, webbing, labels and hooks. A written or electronic record of each inspection should be filled and kept.

This cable safety sleeve meets OSHA, ANSI, and CSA standards.

System:	Lanyard:	Hook:
Fall	Accommodates 5/16-in (8mm) or 3/8-in. (10 mm) cable	Dual shock-absorbing system



FORMETCO
2963 Pleasant Hill Road
Duluth, GA 30096
Tel: (800) 367-6382
Web: Formetco.com

CABLE SAFETY SLEEVE
SAF-VI-GOCABLESLEEVE

Product Details



Description

The Formetco VGCS Vi-Go Cable Safety Sleeve is constructed with durable, corrosion-resistant aluminum and stainless steel components. Uniquely-designed, the Vi-Go Cable Sleeve automatically bypasses intermediate cable guides, keeping both hands free for climbing; travels smoothly along the cable, and locks instantly in the event of a fall.

It offers easy, the one-hand operation for attachment/detachment from the system with no pins/chains or external parts to lose or damage. The automatic pass-through cable guide secures the lifeline to prevent cable wear and enables the system to accommodate curves.

Features:

- Attachment mechanism engineered to prevent incorrect installation, ensuring greater safety. Unit will not open if attached incorrectly.
- Cable sleeve integrated shock-absorbing element
- Provides a “dual shock-absorbing system” to further reduce fall forces. Protects the system and ladder from damage.
- Once a fall occurs, the deployed shock absorber indicates the unit must be taken out of service.
- Accommodates 5/16-in. (8 mm) or 3/8-in. (10 mm) cable.
- Meets OSHA 1926.502 & 1910.27 standards
- Meets ANSI A14.3 standards
- Meets CSA Z259.1-98 (Class AS) standards.

Cleaning

Hand wash with cold water and neutral soap, dry in the shade and keep away from the sunlight when storing.

Inspection

Make an inspection plan with qualified personnel. The products are subject to an inspection before and after each use. Check for damage, deterioration or malfunction of stitching, webbing, labels and hooks. A written or electronic record of each inspection should be filled and kept.

This cable safety sleeve meets OSHA, ANSI, and CSA standards.

System:	Lanyard:	Hook:
Fall	Accommodates 5/16-in (8mm) or 3/8-in. (10 mm) cable	Dual shock-absorbing system

Capacity:	Maximum fall force:	Color:
13 kg/28.6 lb	408 kg/900 lb.	Orange



FORMETCO
2963 Pleasant Hill Road
Duluth, GA 30096
Tel: (800) 367-6382
Web: Formetco.com

RESTING AND POSITIONING LANYARDS

SAF-GE-R300A, SAF-GE-R300AG, SAF-GE-LR300AR

Product Details



RESTING LANYARDS



POSITIONING LANYARD

Description

Formetco Select Resting and Positioning Lanyards with large aluminum rebar hooks provide support while resting or working on fixed billboard ladders. They attach to D-rings either on the chest or hips of a climber's safety harness. Resting and positioning lanyards do not offer fall protection and should be used with other fall-arrest equipment or as part of a full fall-arrest system, such a cable sleeve and vertical lifeline system.

Resting lanyards should be a part of every billboard climber's fall-arrest equipment. Typically used when climbing 30' or taller fixed ladders. When attached to the harness front D-ring and to the fixed ladder rung in front of them, the climber can rest in the harness by propping their legs on a rung and leaning back into the harness allowing the worker to take a break from climbing.

Positioning lanyards keeps the climber correctly positioned while working, which allows them to have both hands free for work while reducing the energy it takes to work in place for long periods of time. These lanyards are "Y" shaped and have two aluminum twist lock snap-hook connections that attach to the safety harness's side D-rings.

Features & Specs:

- Hi-Vis Green webbing
- For work heights over 30' with maximum working load of 310 lbs.
- Rest lanyards are 18" in length
- Positioning lanyards are 24" in length
- Easy-to-use aluminum rebar hooks and twist lock snap-hooks
- For use with fall rated full body harness only
- Webbing material: High Tenacity Polyester
- Carabiners: Engraved with norms and specifications
- Minimum breaking force 5,000 lbs.
- ANSI Z359.3-2019 certified



FORMETCO

2963 Pleasant Hill Road
Duluth, GA 30096

Tel: (800) 367-6382
Web: Formetco.com

ANCHOR BEAM STRAP
SAF-GE-ULT300K4 [S, ML, & XL]

Product Details



Description

Formetco temporary anchoring device is designed to be mounted to structures capable of resisting 2,268 kg (5,000 lb) per worker and providing safe attachment of energy absorbing lanyards.

The color of the product facilitates remote recognition and its contrasting stitching color makes inspection easy for the user. The anchor strap should be selected according to the requirements of the work environment. This product is manufactured under strict quality standards.

Cleaning

Hand wash with cold water and neutral soap, dry in the shade and keep away from the sunlight when storing.

Inspection

Make an inspection plan with qualified personnel. The products are subject to an inspection before and after each use. Check for damage, deterioration or malfunction of stitching, webbing, labels and D rings. A written or electronic record of each inspection should be filled and kept.

System:	Webbing:	Length:
Fall	1 3/4" webbing with 3" polyester wear pad	90 cm/3 ft.
Fall	1 3/4" webbing with 3" polyester wear pad	180 cm/6 ft.
Capacity:	Weight:	Standard:

140 kg/310 lb.	0.650 kg/1.43 lb.	ANSI Z359.18 - 2017
----------------	-------------------	---------------------



FORMETCO
2963 Pleasant Hill Road
Duluth, GA 30096
Tel: (800) 367-6382
Web: Formetco.com

HELMET AND HELMET LANYARD
SAF-GE-HELMET & SAF-GE-HELMETLANYARD

Product Details



Description

Formetco’s work-at-height safety climbing helmets have a chinstrap and optional lanyard that keeps the helmet in place if a fall or impact occurs. They have a suspension system that moves the impact force through the body to feet, helping to reduce strain to the head, neck, and spine. These Type 2 helmets provide protection against vertical and angled impacts up to 60 degrees. In addition, they are rated Class E for high-voltage electrical protection up to 20KV. The short front brim is designed to protect the face from falling objects, sun, reduce glare, and helps shed rain. They include a ratchet system for adjustment and a comfortable fit.

The Formetco helmet lanyard is designed as an interconnection element between the harness the helmet that prevents it from falling when the chin strap is not being used and working at heights.

Features and Specs

- Helmet:**

 - Material: Hight Quality ABS
 - Color: White
 - Short Front Brim
 - Ratchet System for Adjustment
 - Reflecting Bands
 - Type II Class E Safety Helmet
 - Complies with ANSI Z359.1-2014 / CE EN397 Standards
- Helmet Lanyard:**

 - Length: Adjustable
 - Dimension: 6.00 x 12.00”/ 0.15 x 0.30 m
 - Capacity: 0.10 kg/4 lb.
 - Color: Orange Hi-Vis



SAFETY GLASSES AND GLOVES
SAF-GE-GLOVES, SAF-GE-SAFETYGLASSESGRAY

Product Details



Description

Formetco HPPE foam nitrile coated gloves resists abrasions, cuts, tears, and punctures, while offering great grip in wet, greasy, and oily applications. Comfort fitting with high wrist cuff and available in three different sizes.

- Features & Specs:
- Excellent dexterity and flexibility
 - Washable
 - Foam Nitrile Coated
 - High-performance polyethylene material

- ANSI Level A2 Cut, Abrasion, and Puncture Resistance
 - Available in 8-9" Medium, 9-10" Large, and 10-11" Extra Large*
- *Measure around the widest part of palm for size.*



Description

Formetco Smoked Safety Glasses have a sleek, lightweight design which offers a comfortable fit.

- Features & Specs:
- Lightweight design
 - Dual wraparound 9.75 base lens
 - Material: Polycarbonate
 - Color: Smoked
 - Anti-Fog and Scratch Resistant
 - Provides 99.9%UVA & UVB protection
 - Complies with ANSI Z87.1 standards



TOOL POUCH AND TRANSPORT BUCKET
SAF-GE-TOOLPOUCH, SAF-GE-VINYLTOLTRANSPORTBUCK

Product Details



Description

This all-purpose **vinyl bucket** is great for hoisting up billboard hardware such as posters, vinyl's, tools, fasteners, small parts, and ratchet straps. Transport items securely, the hook and loop closure system at the top of the bucket helps keep contents safely inside and prevents spill outs. The long web hoisting strap has the strength needed for hoisting as much as 100 pounds safely. Constructed of water-resistant heavy-duty vinyl, this tool bucket will help keep your tools dry. Best when used with our Kernmantle Hoisting Rope with snap hooks.

- Features & Specs:
- Web Hoisting Strap
 - Weather resistant heavy-duty vinyl
 - Hook and loop closure system
 - Puncture resistant plating sewn into the base of the bucket
 - 100 lb. safe load capacity
 - 12" diameter X 15" tall
 - Black and red color



Description

This all-purpose **canvas belt pouch** is great for tools and fastening hardware. Carry items securely with a drawstring closing top, which keeps inside contents from spilling out when working at heights. Constructed of heavy-duty No. 4 canvas, this tool pouch won't allow its contents to puncture through, keeping the user safe.

- Features & Specs:
- Made of No. 4 Canvas
 - 3" Wide Belt Tunnel
 - Drawstring Closing Top
 - Spud Wrench Loops
 - 9" Wide X 10" H x 5" D



TOOL DROP PREVENTION GEAR

SAF-GE-TOOLLANYARD, SAF-GE-TOOLTAPE, SAF-GE-TOOLDRING, SAF-GE-WRISTBAND, SAF-GE-BATTERYHOLSTER



Description

Formetco tool drop prevention gear is designed to protect people and property from dropped tools when working at above heights. These work great when paired with the Formetco Safety Select Tool Pouch and 5 Gal. Vinyl Transport Bucket.

Features & Specs:

- 36" Elastic Tool Tether Lanyard with Twist Lock Carabiner
- Roll of 1"x10' Self-Adhering Tool Wrap Tape
- D-Ring Tool Attachment Point
- Adjustable Wrist Band with D-Ring
- Cordless Drill Battery Holster



TRAUMA STRAPS

SAF-GE-AT01TRAUMASTRAPS



Description

Formetco's Select Trauma Suspension Relief Straps are an important part of any rescue plan. They can be attached to any full-body harness that does not already have them or as replacements for damaged straps. They are used to relieve pressure and improve circulation in the lower extremities while waiting to be rescued after a fall. When the straps are attached together, they create a loop beneath the climber's feet that the climber can stand in. The climber can bend their knees and use their muscles to balance on the strap, which allows better blood flow and helps mitigate the effects of suspension trauma injuries.

Features & Specs:

- Simple to use after a fall
- Unzip strap packs, hook straps together to form loop, stand in
- Attach to the sides of any safety harness
- Relives pressure on legs while waiting for rescue
- Easy to adjust for different lengths
- 310 lb. weight capacity



FORMECTO

2963 Pleasant Hill Road
Duluth, GA 30096

Tel: (800) 367-6382
Web: Formetco.com

KERNMANTLE HOISTING ROPE

SAF-ROPE [50FT, 75FT, 100FT, 125 FT]

Product Details



Description

The Formetco Kernmantle Rope provides maximum strength with low stretch for hauling up bill-board vinyl's, vinyl hardware, tools, and even extensions. The low stretch and bounce properties and high-moisture resistance allow this rope to operate consistently in wet and dry, hot, or cold conditions. The polyester material and construction also give this rope extremely high resistance to chemicals, UV and abrasion, great overall handling, and gear compatibility thanks to the firm, smooth sheath. This rope is only available in white with hi-vis green tracers, and 4 different lengths all come with durable plastic eyes on both ends and aluminum twist lock snap hooks.

Features:

- 100% polyester
- Large 5/8" diameter makes for easy gripping and handling
- Low elongation is great for any haul system
- Ideal for many industrial applications
- Resistance to water, chemicals, UV, and abrasion
- Great gear compatibility

Cleaning

Hand wash with cold water and neutral soap, dry in the shade and keep away from the sunlight when storing.

Inspection

Make an inspection plan with qualified personnel. The products are subject to an inspection before and after each use. Check for damage, deterioration or malfunction of stitching, rope, labels and hooks. A written or electronic record of each inspection should be filled and kept.

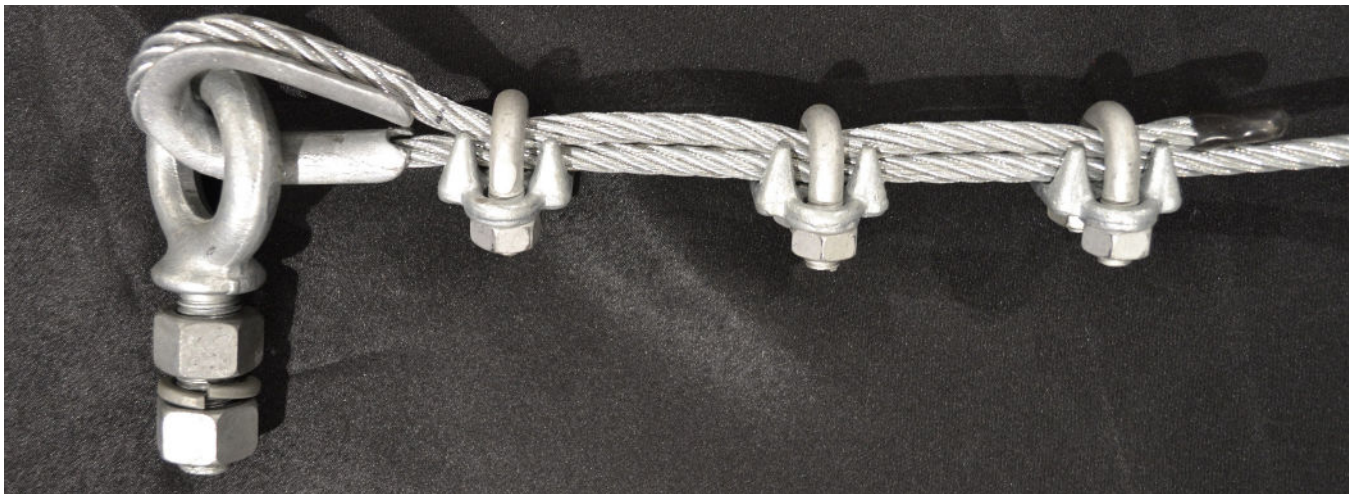
Weight:	Diameter:	MBS:	Elongation at 10%:	Elongation at 300lbs:
12.5 lbs/100'	5/8" (16mm)	11,240 lbs (50 kN)	MBS: 2.8%	1.6%

Sweing of the terminals:	Length:	Capacity:	Color:	Standard:
>30 kN	15 m/50 ft.	140 kg/310 lb	White	ANSI Z359.15 - 2014
				20 m/75 ft. 30 m/100 ft. OTHER LENGTHS: 40 m/125 ft.



HORIZONTAL LIFELINES

USED TO PROTECT CLIMBERS FROM FALLS IN ELEVATED WORK ENVIROMENTS



Formetco's horizontal fall arrest cable system is an economical and practical solution for new or existing, poster and bulletin billboard structures.

Easy to install and maintain, all components are made from the highest-grade materials for outdoor durability while meeting or exceeding applicable ANSI and OSHA regulations. Only recommended for applications no less than 15' above ground when the system is placed for foot level tie off. For structures less than 15' above ground we strongly recommend using our Shepherd's Hook / Safety Pole product.



Steel Cable

- 3/8" Galvanized 7x19 Aircraft Cable
- Product Code: CABLE3/8AIRCRAFT
- Available as custom lengths or on 250', 300', and 500' spools
- Add 5' extra feet of cable when ordering custom lengths



Clip

- 3/8" Heavy Duty Hot Dipped Drop Forged Wire Rope Clip
- Product Code: CABLEHDW3/8CLIP
- (6) Required per lifeline system
- Torque to 45 lbf. ft.
- Space 4 inches apart



Thimble

- 3/8" Heavy Duty Hot Dipped Wire Rope Thimble
- Product Code: CABLEH-DW3/8THIMBLE
- (2) Required per lifeline system



Eye Bolt

- 3/4" x 2-1/2" Hot Galvanized Drop Forged Shoulder Eye Bolt w/ (2) Nuts & (1) Lock Washer
- Product Code: CABLEHDW3/4X2.5EYEBOLT
- (2) Required per lifeline system

VERTICAL LIFELINES - LADDER GRAB™ SYSTEM

100% HOOKUP FROM GROUND TO DECK



Formetco developed the only system that protects the worker from the ground through the transition to the upper catwalk.

- Complies with OSHA requirements for Walking-Working Surfaces and Fall Protection Safety
- An engineered system with ongoing ANSI compliance testing
- Made from high-grade components to ensure the greatest structural integrity
- Can be purchased with or without cable, as long as the selected cable meets system specifications
- Can be used with two climbers
- Simple and effective, easy to install by following the provided instructions
- Product Code: *LAD-GRAB2-BASIC-0, *LAD-GRAB2W/STABILIZER-0
- For more information and videos visit laddergrab.info



FORMETCO

2963 Pleasant Hill Road
Duluth, GA 30096

Tel: (800) 367-6382
Web: Formetco.com

LADDER STABILIZER FOR CATWALKS

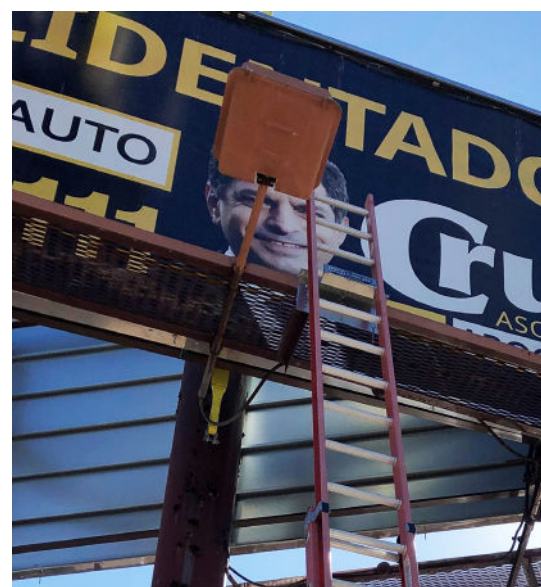
DESIGNED TO PREVENT LADDERS FROM SLIPPING OR TIPPING



Avoid heart-stopping ladder experiences with Formetco's Ladder Stabilizer Device

We are proud to announce the Ladder Stabilizer for Catwalks. This product is specially designed to prevent ladders from slipping or tipping unexpectedly while accessing catwalks. Installation of this device is permanent, and creates a safe access point to a specific area, taking the guess work out of where to place a ladder at each structure. The Stabilizer eliminates unstable ladders for both the first man up and other climbers, while ensuring that the ladder is placed at the correct angle of 75 degrees.

- Constructed out of quality galvanized steel that is corrosion resistant and ideal for use outdoors.
- This device is suitable to be attached to catwalk kickrails.
- The Ladder Stabilizer can accept a wide variety of round rung extension ladders.
- We recommended that the Ladder Stabilizer be placed in close proximity to horizontal and vertical lifeline systems, allowing easier and safer, minimizing risk when work is being carried out.
- Product Code: *LADDERSTABILIZER-KR-BKT



Important Safety Warning

- It is important to note that the Ladder Stabilizer is a stabilizing product to keep ladders in place. The weight of the person must be supported by the ladder's placement on the ground and against the product itself. Hanging the ladder solely on the stabilizer device is not recommended and may cause unnecessary strain to the ladder.
- As with all products designed for use in risk prone situations, we recommend that this diagram is carefully read and understood before installation and use. It contains helpful and clear illustrations for your benefit.
- Please keep in mind even with the ladder at the correct angle and resting in the stabilizer device, it can still tip sideways if the feet aren't level with each other and on solid ground. It's unsafe to stack boards, bricks or other stuff under one of the feet to level the ladder. Instead, scrape out a shallow trench under the high-side foot to level the ladder. The claw of a hammer is perfect for this task, and it's almost always handy. If digging is impractical because your site is steeply sloped, or you have to set the ladder on some other uneven, hard surface, purchase adjustable leg-leveling extensions that bolt onto the bottom of your ladder. This item is also available through Formetco. When ordering, please note the make and model of your ladder.



LADDER STABILIZER



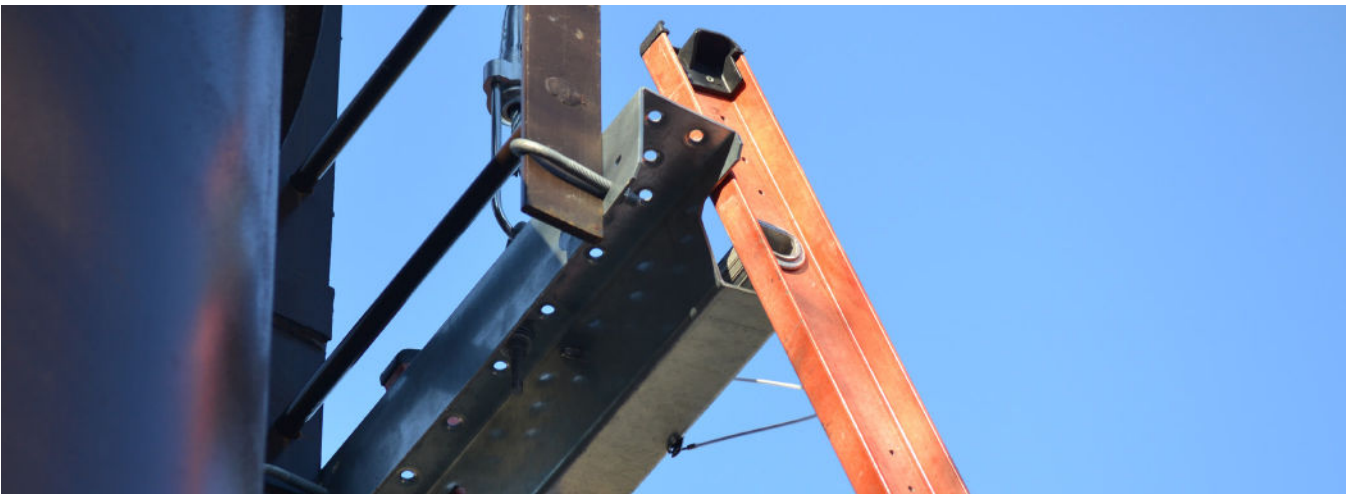
FORMETCO

2963 Pleasant Hill Road
Duluth, GA 30096

Tel: (800) 367-6382
Web: Formetco.com

LADDER STABILIZER FOR FIXED LADDERS

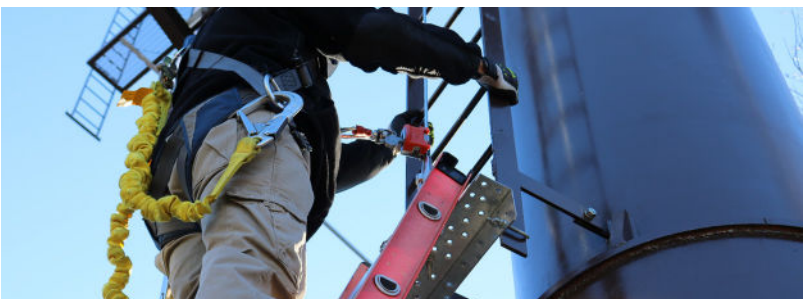
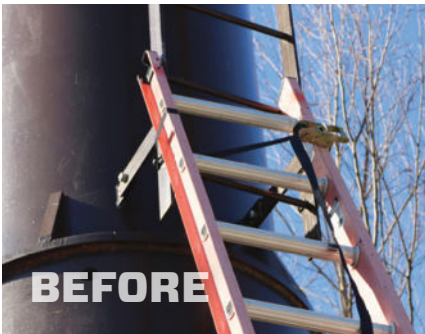
DESIGNED TO PREVENT LADDERS FROM SLIPPING OR TIPPING



Avoid heart-stopping ladder experiences with Formetco's Ladder Stabilizer Device

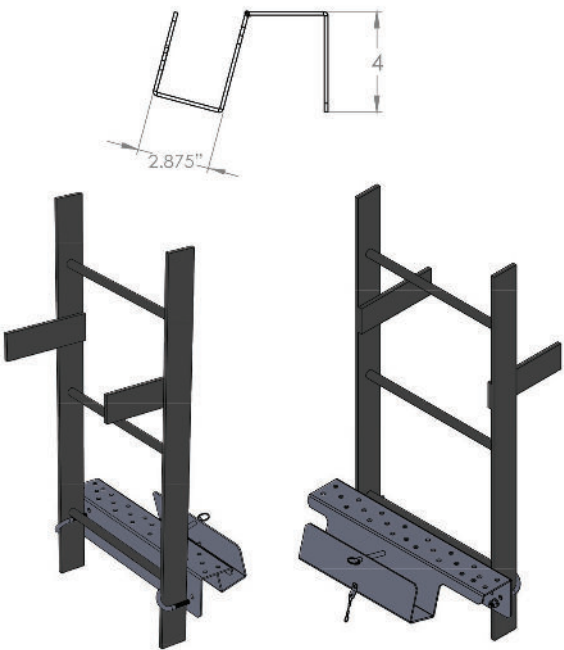
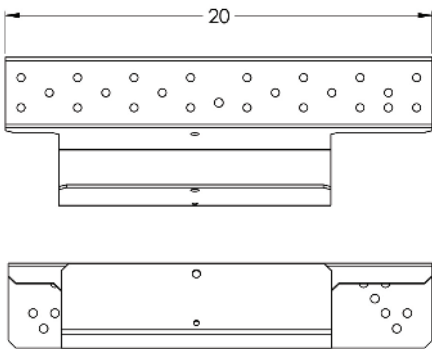
We are proud to announce another great innovation for the Outdoor Advertising Industry called the Ladder Stabilizer. This product is specially designed to prevent ladders from slipping or tipping unexpectedly while accessing catwalks or fixed ladders. Installation of this device is permanent, and creates a safe access point to a specific area, taking the guess work out of where to place a ladder at each structure location. The Stabilizer eliminates unstable ladders for both the first man up and other climbers, while ensuring that the ladder is placed at the correct angle of 75 degrees.

- Constructed out of quality galvanized steel that is corrosion resistant and ideal for use outdoors.
- This device is suitable to be attached to fixed ladders. To attach to fixed ladders, you need only to bolt to the bottom rung using U-bolts. This product comes with a complete installation kit.
- The Ladder Stabilizer can accept a wide variety of round rung extension ladders.
- We recommended that the Ladder Stabilizer be placed in close proximity to horizontal and vertical lifeline systems. This way, when work is going to be carried out, access is easier and safer, minimizing risk.
- Product Code: *LADDERSTABILIZER



Important Safety Warning

- It is important to note that the Ladder Stabilizer is a stabilizing product to keep ladders in place. The weight of the person must be supported by the ladder's placement on the ground and against the product itself. Hanging the ladder solely on the stabilizer device is not recommended and may cause unnecessary strain to the ladder.
- As with all products designed for use in risk prone situations, we recommend that this diagram is carefully read and understood before installation and use. It contains helpful and clear illustrations for your benefit.
- Please keep in mind even with the ladder at the correct angle and resting in the stabilizer device, it can still tip sideways if the feet aren't level with each other and on solid ground. It's unsafe to stack boards, bricks or other stuff under one of the feet to level the ladder. Instead, scrape out a shallow trench under the high-side foot to level the ladder. The claw of a hammer is perfect for this task, and it's almost always handy. If digging is impractical because your site is steeply sloped, or you have to set the ladder on some other uneven, hard surface, don't opt for a makeshift solution. Instead, buy adjustable leg-leveling extensions that bolt onto the bottom of your ladder. This item can also be purchased through Formetco, just be sure to have the make and model of the ladder available.



Fixed Ladder Mounted

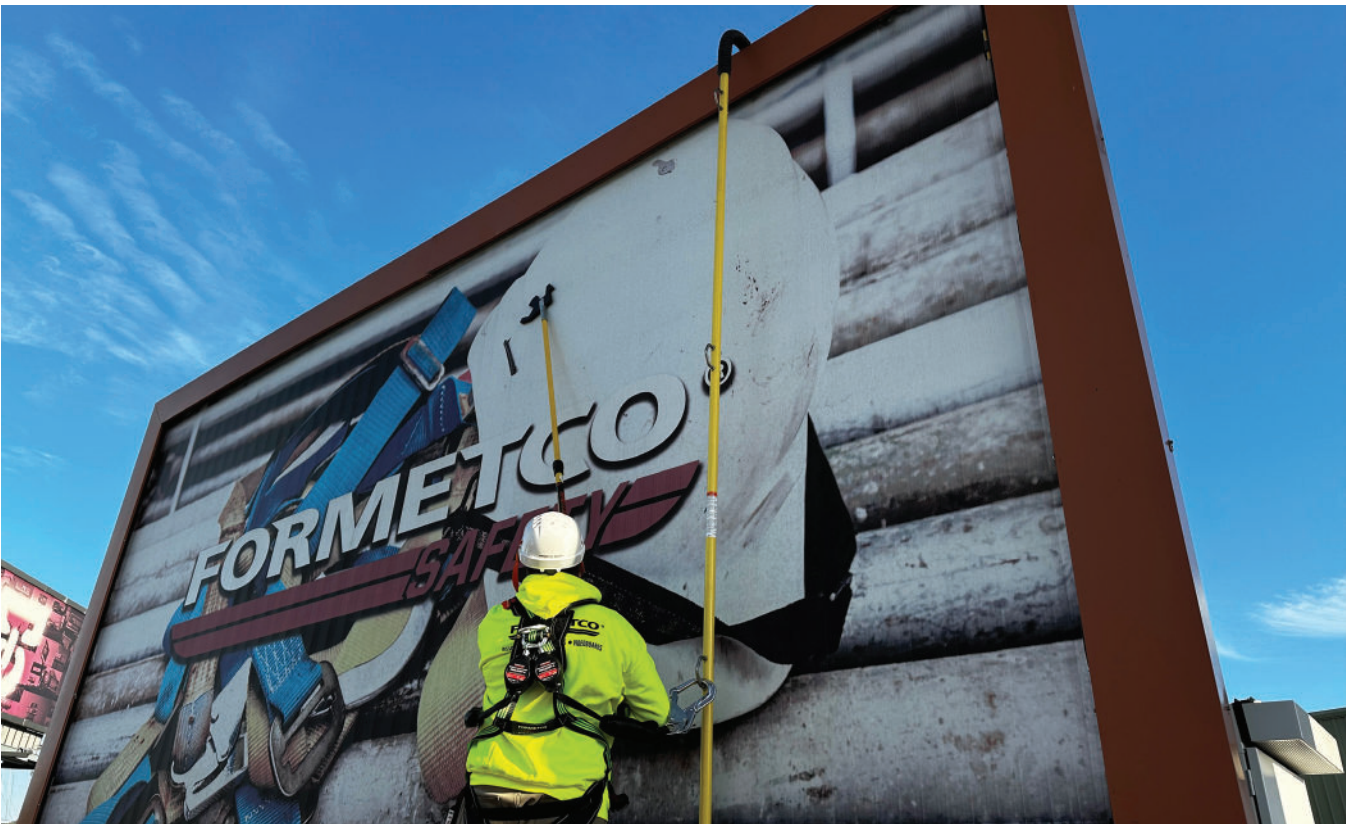


FORMETCO

2963 Pleasant Hill Road
Duluth, GA 30096

Tel: (800) 367-6382
Web: Formetco.com

SAFETY POLE
THE ULTIMATE SAFETY SOLUTION FOR STRUCTURES LESS THAN
15' ABOVE GROUND



Features and Benefits

- A wide open hook that fits over posters and bulletin billboards
- At 10' and 14' long, the Safety Pole is the perfect size for handling and storage
- Three stainless steel tie-off points for maximum versatility
- New design constructed of non-conductive high strength composite material
- Keeps workers tied off above the chest for greater safety on low to ground billboard structures
- No need to tie off to a posting ladder
- Tested to 5000 lbs
- OSHA Compliant and Fall Arrest Certified
- Product Code: SAFETYPOLE10H, SAFETYPOLE14H

Hardware Sales

(833)249-2226



Denise Roberts
East Coast
 678-951-1155
 678-478-6255
 deniser@formetco.com



Matt Moates
West Coast
 678-951-1159
 813-900-7238
 mattm@formetco.com



Chris Adams
Product Specialist
 678-951-1203
 770-329-4316
 chrisadams@formetco.com



Caylee Franklin
Hardware Sales & Marketing Administrator
 678-951-1151
 cayleef@formetco.com

Notes:



FORMETCO
2963 Pleasant Hill Road
Duluth, GA 30096
Tel: (800) 367-6382
Web: Formetco.com



FORMETCO

SELECT

SAFETY EQUIPMENT