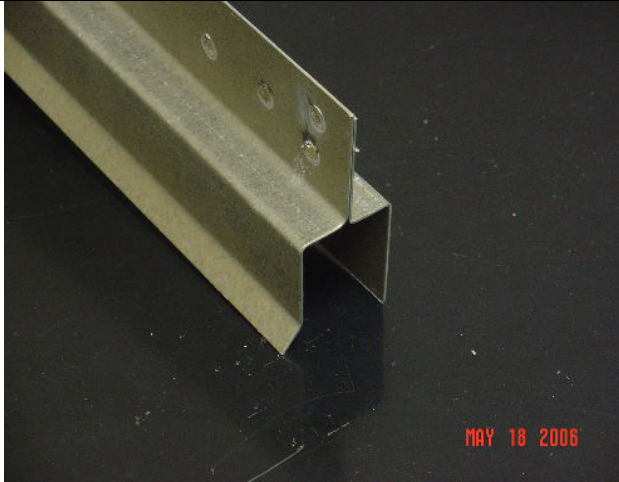


# FORMETCO CUT-OUT RETAINERS



## \* **RLRETAINER**

8' Rotarylok Retainer (For 1" Rotarylok Panels)  
1-1/8" Opening

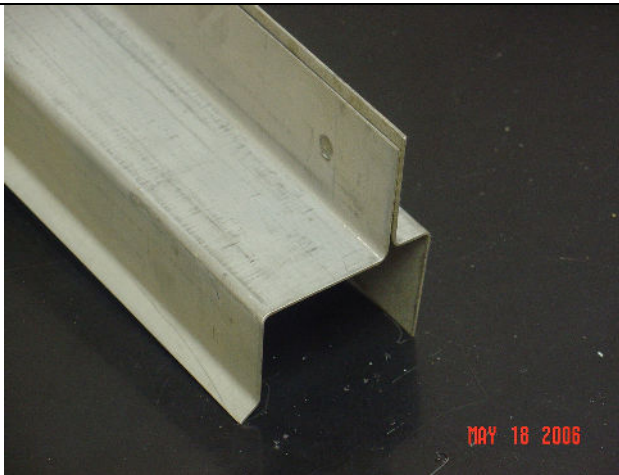
Picture is taken from the backside of the Retainer and positioned as it would appear in use in the field.



## \* **DURAPAINTRAINER**

8' DuraPaint Retainer (For Wood or DuraPaint Panels)  
1-7/8" Opening

Picture is taken from the backside of the Retainer and positioned as it would appear in use in the field.



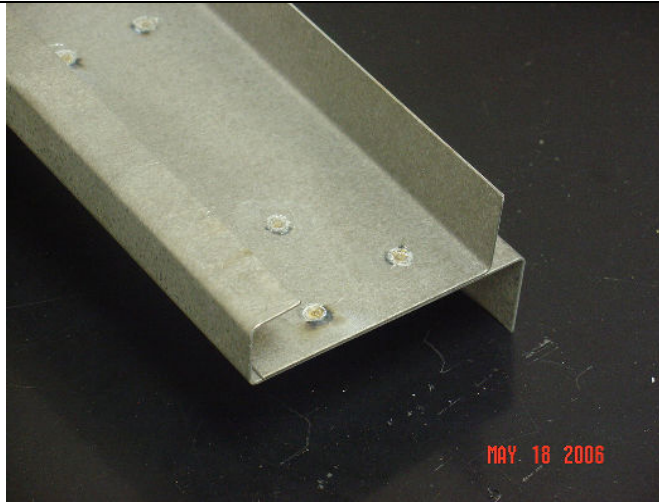
## \* **HOPCORERETAINER**

8' HOP Retainer (For metal HOP or Butler Panels)  
2-1/8" Opening

Can also be used on 2" Horizontal Poster Panels.

Picture is taken from the backside of the Retainer and positioned as it would appear in use in the field.

# FORMETCO CUT-OUT RETAINERS

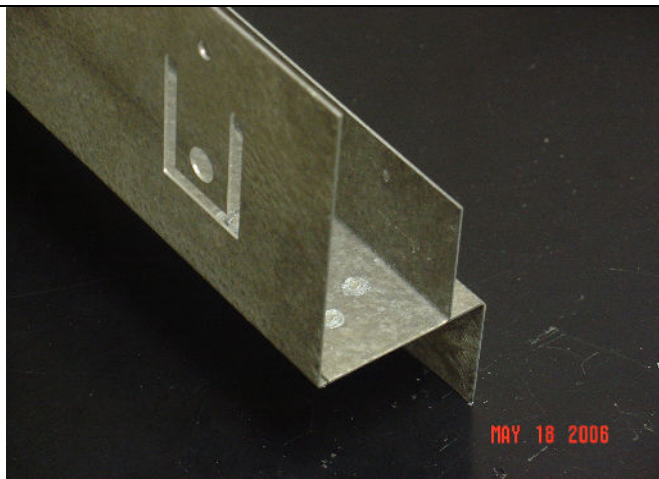


## **RETAINERUNIVERSAL**

8' Universal Retainer (For metal, wood, or panel-less wind frames)

Customer must specify the thickness and type of material used for the cut-out (DuraPly, MDO, Plywood, Aluminum, Sheet Metal, Coroplast, etc.)

Picture is taken from the backside of the Retainer and positioned as it would appear in use in the field.

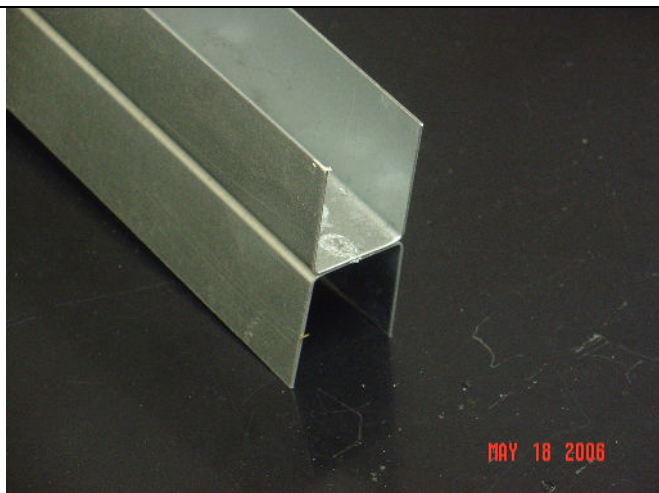


## **RETAINERUNIVERSALSLOTTED**

8' Universal Retainer Slotted (For metal, wood, or panel-less wind frames)

Customer must specify the thickness and type of material used for the cut-out (DuraPly, MDO, Plywood, Aluminum, Sheet Metal, Coroplast, etc.)

Picture is taken from the backside of the Retainer and positioned as it would appear in use in the field.



## **RETAINERFX8'FORRLONRL**

8' H-Retainer For Rotary's On Rotary's  
1-1/8" Opening

Used for double stacking Rotarylok's on top of Rotarylok's.

(In addition, when not welded together the single pieces can be used as 1"x 8' Metal Edge Molding for Rotaryloks. These are also available in 2"x 8' & 2"x 12' pieces for Poster Panels and HOP/Butler Panels.)

Picture is taken from the backside of the Retainer and positioned as it would appear in use in the field.